



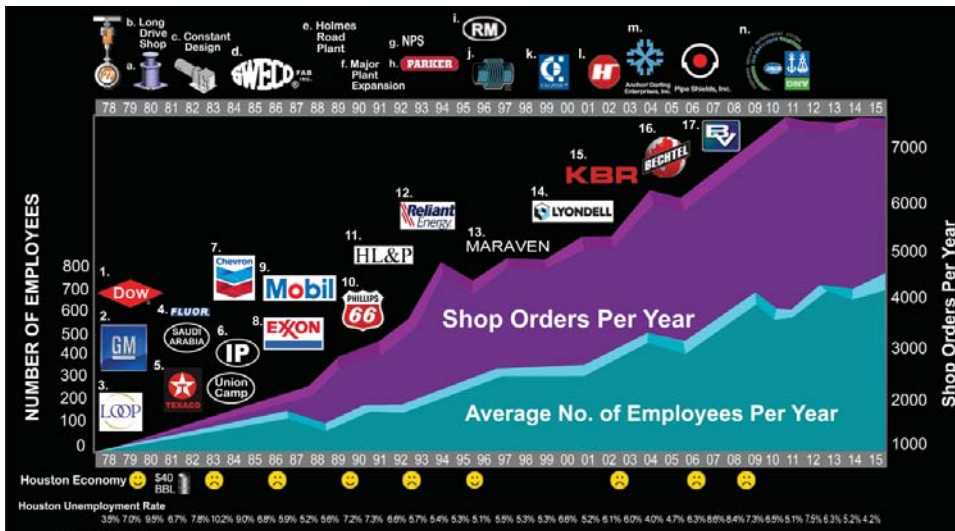
# Piping Technology & Products, Inc.



[pipingtech.com](http://pipingtech.com) | [info@pipingtech.com](mailto:info@pipingtech.com) | 713-731-0030 | 3701 Holmes Rd., Houston TX 77051



Piping Technology & Products (PT&P) manufactures high-quality engineered pipe supports, pipe hangers, pipe shoes, pipe expansion joints and more. We design and manufacture an extensive product line supporting the chemical, petroleum, LNG, power, solar, geothermal, wastewater industries.



- 40+ Years of Business
- 3 Million Piping System Products In Service
- Supplied Products & Services in Over 40 Countries to Almost Every Major Oil and Gas, Chemical, and Power Company
- Over 500 Production Employees & 70 Design Engineers in Houston Producing 1M+Pounds per Month



# Manufacturing Capabilities

~ 500 Production Employees  
1 Million Pounds Shipped Per Month



**4 CNC PLASMA MACHINES**



**50 WELDERS & FITTERS**



**4 ROLLS & 4 PRESSES**



**10 HIGH TECH SAWS**



**HIGH CAPACITY FOAM MACHINE**



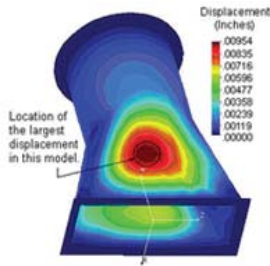
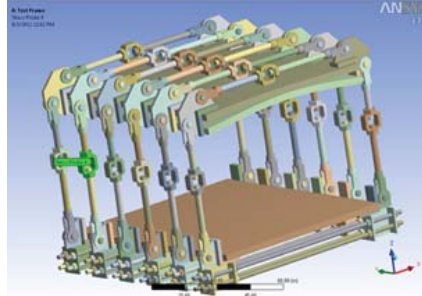
**INCREASED SHIPPING SPACE**



# Engineering & Design Services

## MegaTon Spring Supports Testing Apparatus

PT&P designed and fabricated a custom testing apparatus to set and test the load capability for an ultra high weight (in excess of 600,000 lb.) big ton spring support. Hydraulic Cylinders were placed against the upper beams of the apparatus and the mega ton load flange to perform the testing.

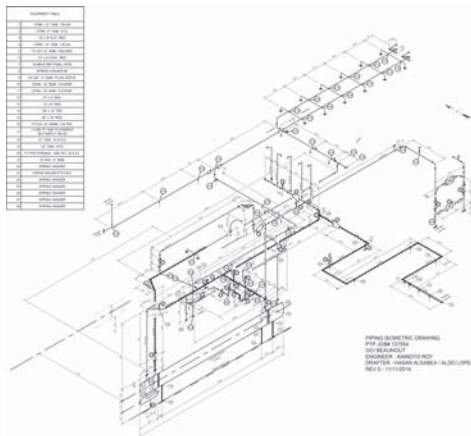
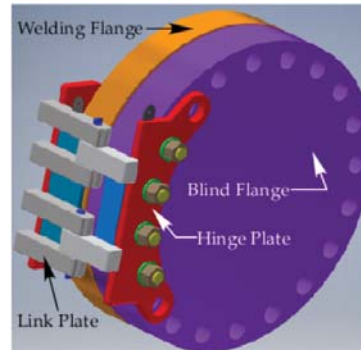


## Finite Element Analysis (FEA) on Transition Piece

In this case, FEA was used to optimize the design of a carbon steel transition piece with an operating range of 18.7 PSI to full vacuum. The design overview determined all stresses were within acceptable levels without requiring additional gussets, veins, etc.

## Removable and Portable Hinges

Standard practice is to have the hinges permanently fixed to a portion of the vessel. Removable hinges provide access for maintenance or inspection on welding flange or inside the pipeline. PT&P supplied 159 hinges with sizes varying from 8" to 72" to BECHTEL and CHEVERON for the Wheatstone Project.



## Pipe Stress Analysis

Over-stress in a client piping system prompted for a stress analysis by PT&P because of the lack of information from the client side. PT&P gathered all piping and piping component dimensions and information required, and prepared a complete isometric sketch for the complete piping system. PT&P used CAESAR II program to model and perform a stress analysis on the complete piping system. Support recommendations were made to eliminate the stresses in piping. Final CAESAR II output results with the modifications, Isometric stress sketch showing the node points are submitted to the client.



# Expansion Joints | Bellows



Designed and  
Manufactured  
in USA

U.S. Bellows, Inc.



63" In-line Pressure  
Balanced Expansion Joint  
with Refractory Lining for  
Clean Fuels Project

36" Pressure Balanced  
Elbow Expansion Joint  
with Inconel 625 LCF  
Bellows



42" Dia. Hinged Universal  
Expansion Joint Designed  
with Panto-graphic  
Linkage



Universal Expansion Joint  
with 5" Thick Refractory  
Lining for a Styrene Plant



32" Dia. Elbow Pressure  
Balanced Expansion Joint  
for an Exhaust Duct in a  
Power Plant

44" Double Gimbal  
Universal Expansion  
Joint Designed for an Oil  
Refinery



Reversed Engineered a 72 year old Single Hinged Expansion Joint for A Refinery in Louisiana  
within 72 Hours to get the Plant back into Production (with 3-D drawing)

Email: [sales@usbellows.com](mailto:sales@usbellows.com) | Phone: +1 (281) 241-9418 / (855) 591-0906

# Full Piping System Support



**STRUCTURAL  
SUPPORTS &  
STANDS**



**ENGINEERED SPRING SUPPORTS**  
(Variables, Constants, Big Tons, Compact, Disc Springs)



**CUSTOM STEEL  
FABRICATION**



**VIBRATION CONTROL DEVICES**  
(Sway Braces, Snubbers, Sway Struts)



**PRE-INSULATED SUPPORTS**  
(Cryogenic and High Temperature)



**ASME/MISC.  
FABRICATION**



**FAB. PIPE SHOES, GUIDES & ANCHORS**



**EXPANSION JOINTS & DUCT WORK**



# Field | Turnaround Services



- Survey, Inspection & Audit
- Assessment & Adjustment
- Isometrics & Database
- Stress Analysis & FEA
- Refurbishment & Repair
- Installation & Maintenance
- Reverse Engineering
- Turnaround Planning
- Troubleshooting & Testing
- On-site Project Supervision

A Texas chemical plant sent us their old expansion joint to be replaced with a new one reusing the existing flanges for ease of installation.



A local refinery asked us to size / replace another vendor's failed spring hanger for PT&P's equivalent in under 24 hours.



**24/7 Emergency / Quick-Turn**  
[pipingtech.com/emergency](http://pipingtech.com/emergency)  
[emergency@pipingtech.com](mailto:emergency@pipingtech.com)  
(800) 787-5914

**Field Services**  
[pipingtech.com/services/field-service](http://pipingtech.com/services/field-service)  
713-992-7048

PT&P's Field Service Team was called out to consult on how to properly support a high temperature line with extreme movement at a coal refinery.



An Oklahoma Coal Power Plant contracted PT&P Field Services to install a few 54,000 lb. capacity Constant Spring Supports 250 feet up on the unit where a crane could not reach.

